

117  
 Sward  
 $\sqrt{1.17} = 01.08$   
 360 divisible  
 2-12, 18 & 36  
 except 11 & 7

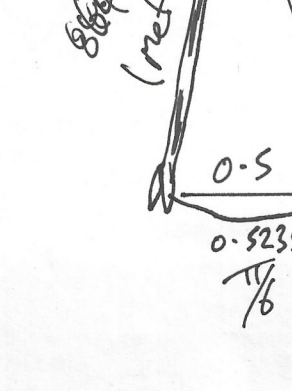
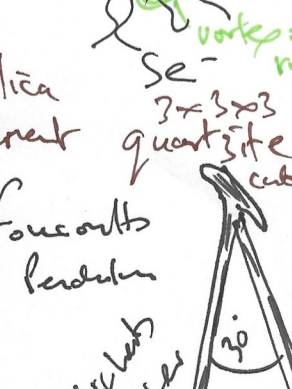
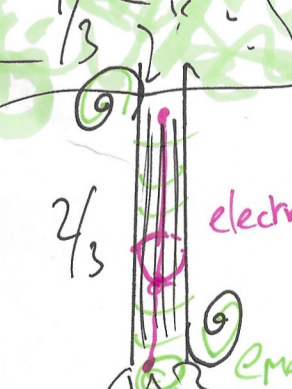
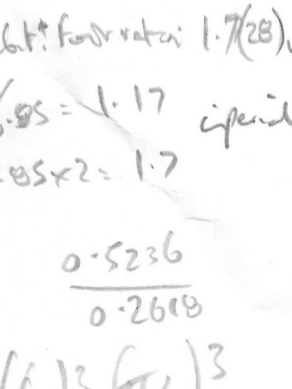
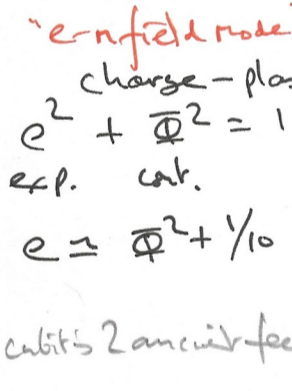
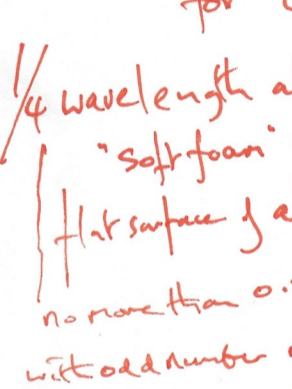
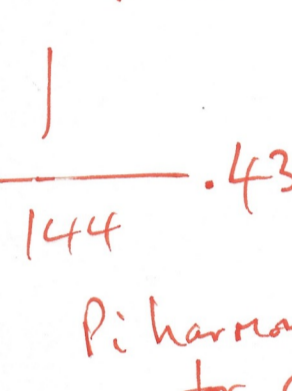
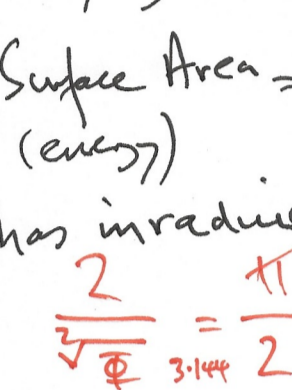
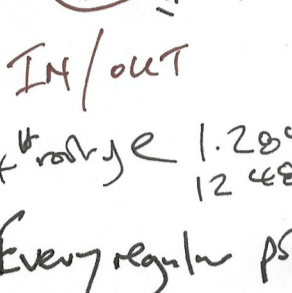
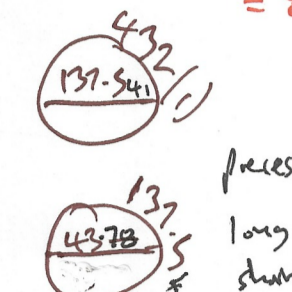
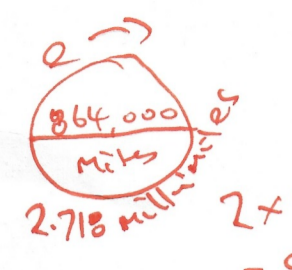
$\phi = 0.618$   
 see led by At "Kij Sans"  
 Bible PSALM  
 594 ← 117 → 594  
 centre sound  
 117 hertz trigger =  
 chanting G.P.

127

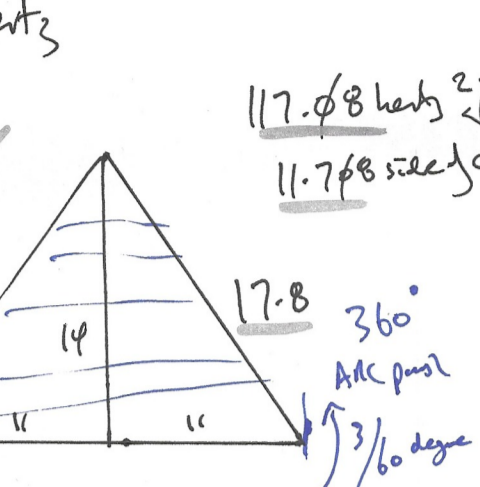
27 grid telluric-m  
 3, 9, 27, 81  
 Sunday - Arles Obelisk

137

$27 \times 37 = 999$  complete cycle  
 $E = \pi - R - G \sqrt{1-2337} = 1.111$   
 $11.111 = \frac{270 \times 4}{972}$   
 $\pi = \left(\frac{180}{\sqrt{333}}\right)^{1/2}$

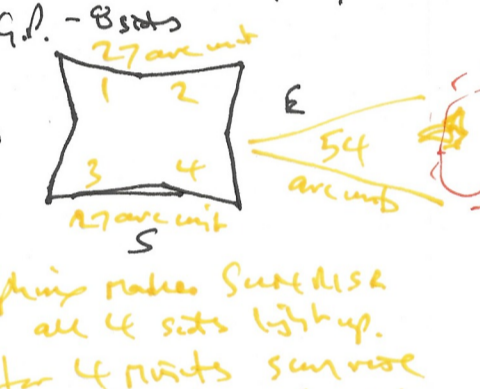


2 x 432 = 864  
 360 degrees = 1 year  
 117 hertz



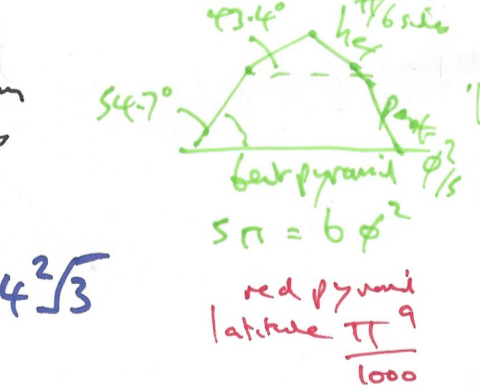
Some fact: Cubit  
 $1 \times 1.7117$   
 "117"  
 where  $\phi = \frac{\sqrt{317}}{11}$

Equinox times with SCEN  
 are HARMONY times for  
 vibration of all telluric energy  
 lines - datum point for Earth's  
 equatorial plane 90° to Sun's ecliptic plane  
 $\approx 25771 \text{ yrs}$

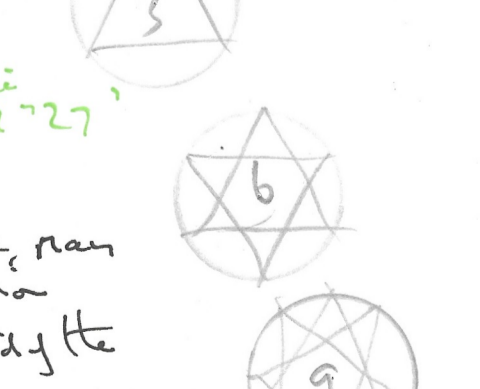


Spin makes Sweden  
 all 4 sides light up.  
 for 4 points sun rise  
 & 4 sets sunset  
 at each equinox.

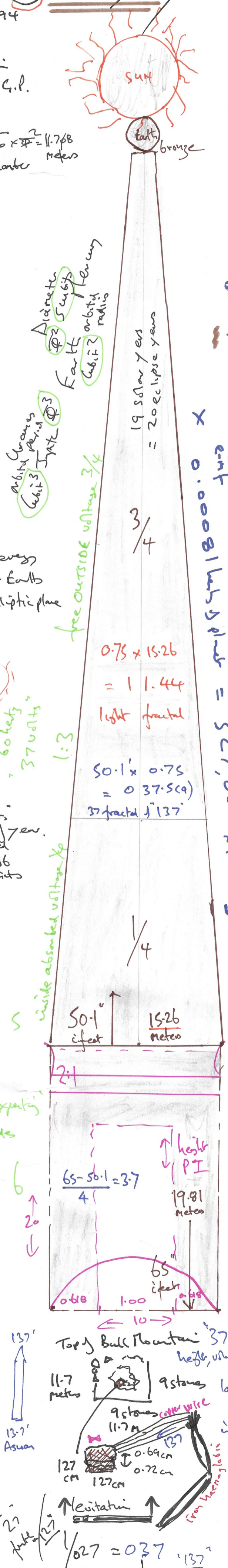
ancient fact  
 $\pi = \phi^2 + \frac{\phi^2}{5}$   
 $\pi \left(\frac{6\phi^2}{5}\right) = \log 6$



only 3, 6, 9  
 perfectly double  
 circle "orb"



pendulum  
 to control measure man  
 & levitation  
 fourth cubic grid of the  
 solar system  
 $\frac{1}{\pi^2/6}$



$\phi = e^{-i \arcsin(\frac{i}{2})}$   
 Orb constants  
 change by  $\phi$  compression  
 $\phi = e^{\frac{i\pi}{5}} + e^{-\frac{i\pi}{5}}$   
 reverse Radiance  
 Side  $\frac{2}{5} = \frac{1}{\phi} + \frac{1}{\phi}$

Van Ordo length  
 037  
 081  
 1.17 x 0.32  
 $0.00081 \text{ km} \times 10^4 = 8.1 \text{ m}$

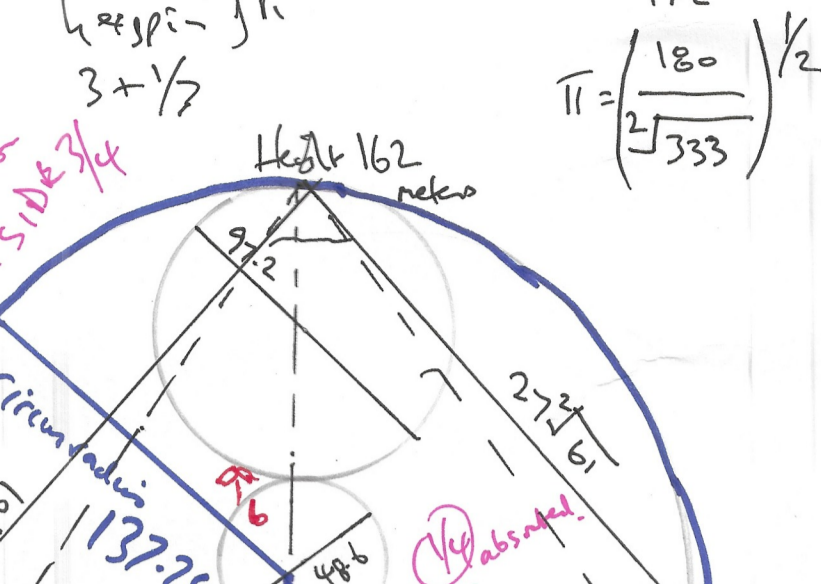
light fractal  
 $50.1 \times 0.75 = 0.375 \text{ sec}$   
 37 fractal of 137

Scalar/longitudinal  
 Gravity  
 $\sqrt{3} - 1 \times 10 = 7.321$   
 transverse spi  
 $E = \pi$

Time @  
 Pinet 5.03 am  
 21.6.2023  
 Sunday

Top of Bull Mountain 37  
 height, volume, eff-  
 chunk,  
 layer  $3 \times 7 \times 10 = 210$   
 or 201  
 inside after light  
 @ 37 cubits

Newton  
 P. Platina  
 Arts 43-48



Aggregated light  
 result  $\sum \frac{1}{n^2} = \frac{\pi^2}{6}$  free  $\frac{1}{n^3} \times 3 \times 6 \times 9 = 162 \text{ meters}$   
 $\frac{1}{\pi^2/6} = \frac{6}{\pi^2}$

Volume  $\frac{27}{\pi^2/6} = 0.455$   
 Cubit/meter of solar  
 system orb factor -- to our  
 Stonebuildings

Is Gravity 1/5  
 $10^{-1/5} = 9.8 \text{ m/s}^2$   
 $\left(\frac{\pi^2}{6}\right)^4 = 7.321$   
 ALPHA 137  
 731

Scalar/longitudinal  
 Gravity  
 $\sqrt{3} - 1 \times 10 = 7.321$   
 transverse spi  
 $E = \pi$

Earth Grid  
 $144,000 = 144,000$   
 Nautical miles Minutes of Arc  
 per second grid per second

Newton  
 P. Platina  
 Arts 43-48

1/4 wavelength absorption  
 "soft foam" - "helium 3 slit"  
 flat surface of atoms/photon  
 no reflection 0.75 difference  
 with odd number multiples  
 "entire wave" reflection  
 charge - plasma cosmology  
 $e^2 + \phi^2 = 10$  activities  
 exp. cat.  
 $e = \phi^2 + 1/10$  .  $e \pi - \pi = 20$

1 cubit 2 arc minutes  
 cubit for ratio 1.728  
 $1/0.85 = 1.17$  iperifour  
 $0.85 \times 2 = 1.7$

St. Catherine's Chapel  
 N + S door + 5 towers

glaucanitic  
 clay earth battery

electro  
 magnetism

pendulum  
 to control measure man  
 & levitation  
 fourth cubic grid of the  
 solar system  
 $\frac{1}{\pi^2/6}$

Earth 365.2422 x 360 x 1000 x length  
 of 1 Bullfoot