

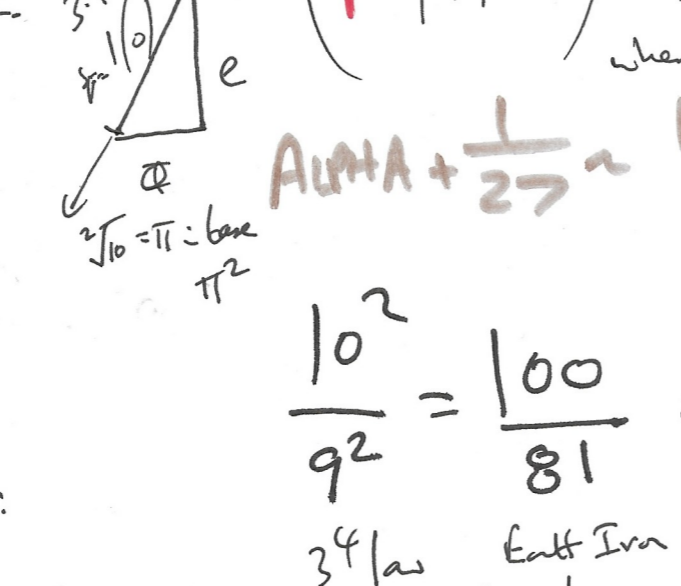
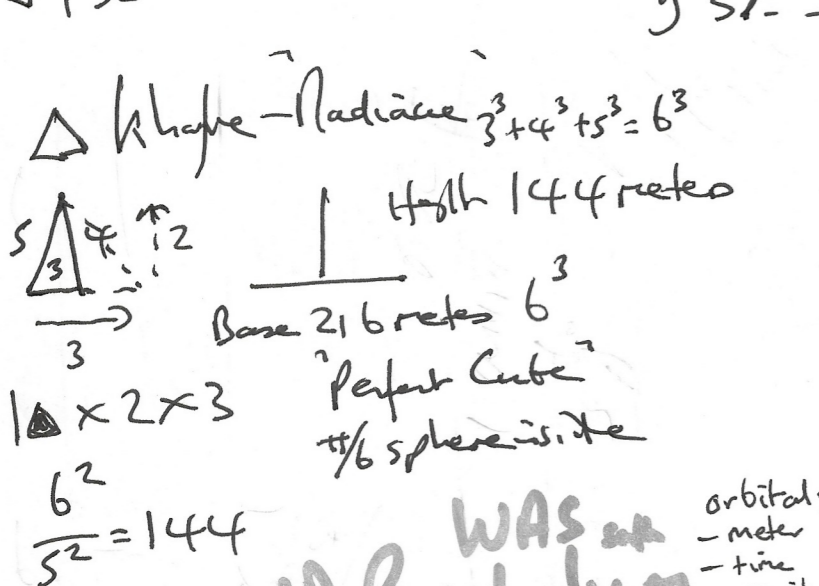
2 Queens shafts - G.P.  
 $\sqrt{432} = 6.57$   
 $\sqrt[3]{432} = 6.57$   
 $\sqrt[4]{432} = 6.57$

great fractal part of 137 is 37.013  
 great fractal part of 2-7181828 e expansion  
 $\rightarrow 5.2137$   
 $\frac{1}{2}$  duty of 37

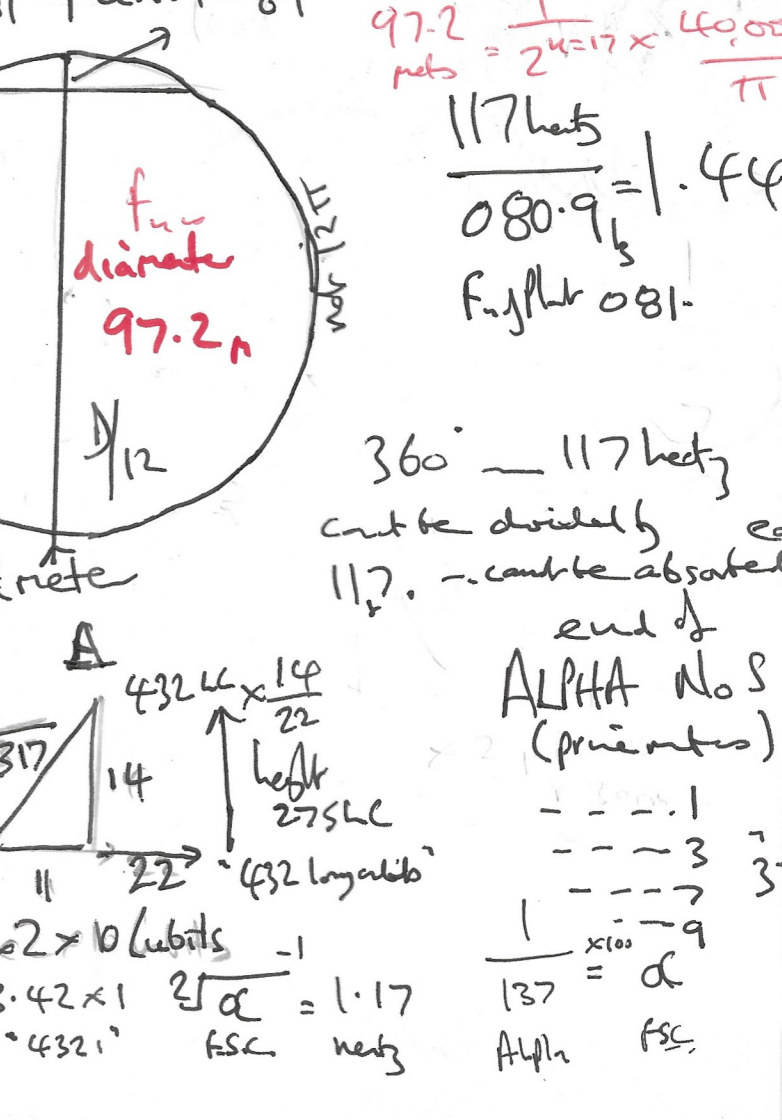
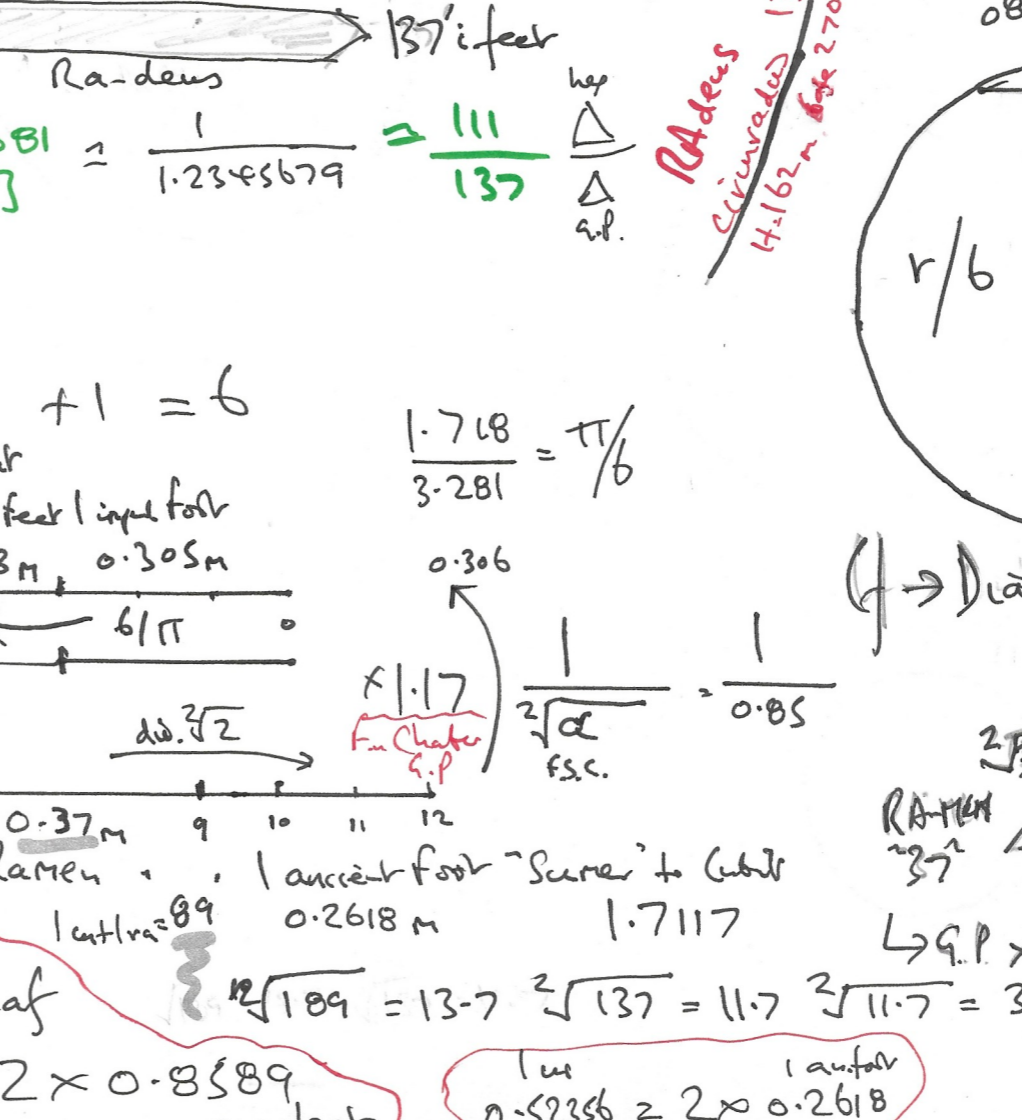
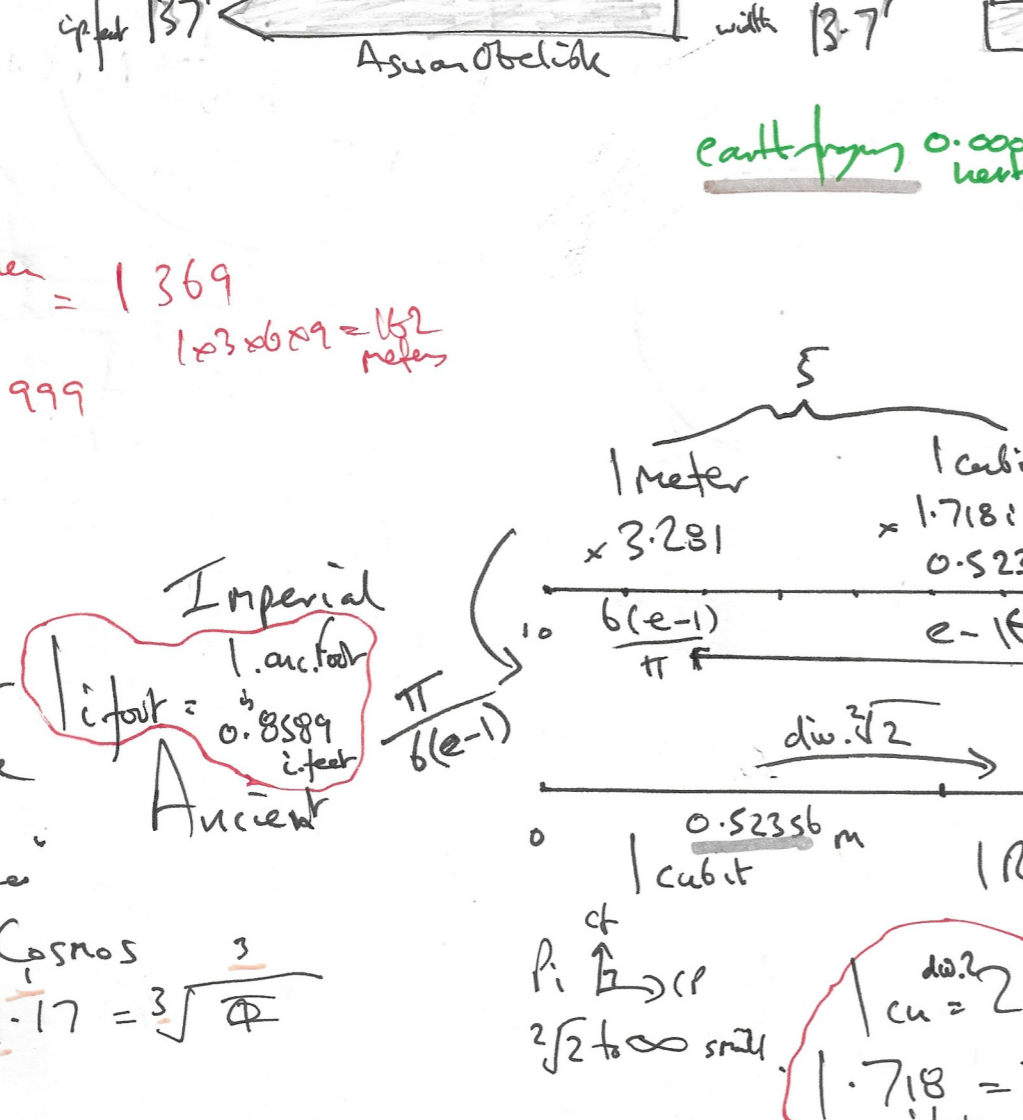
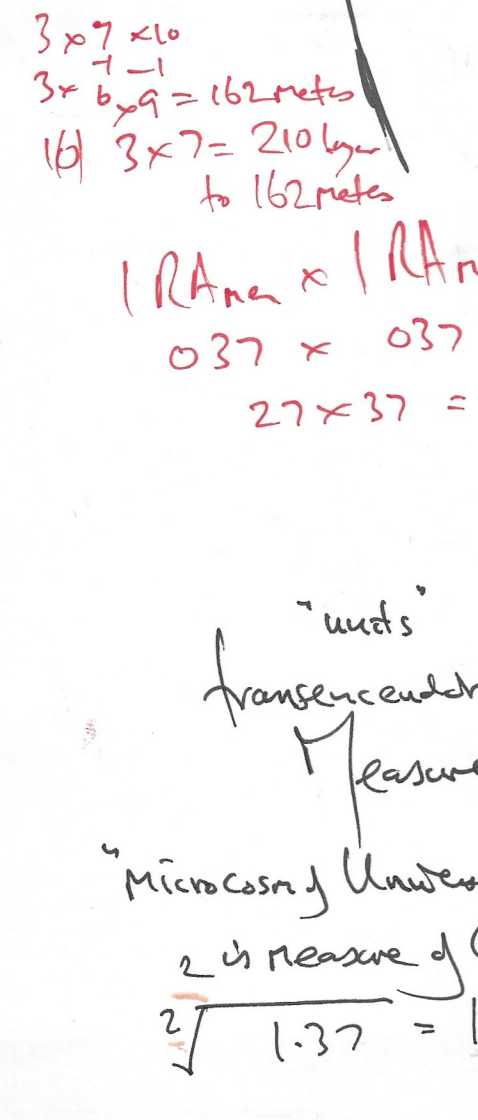
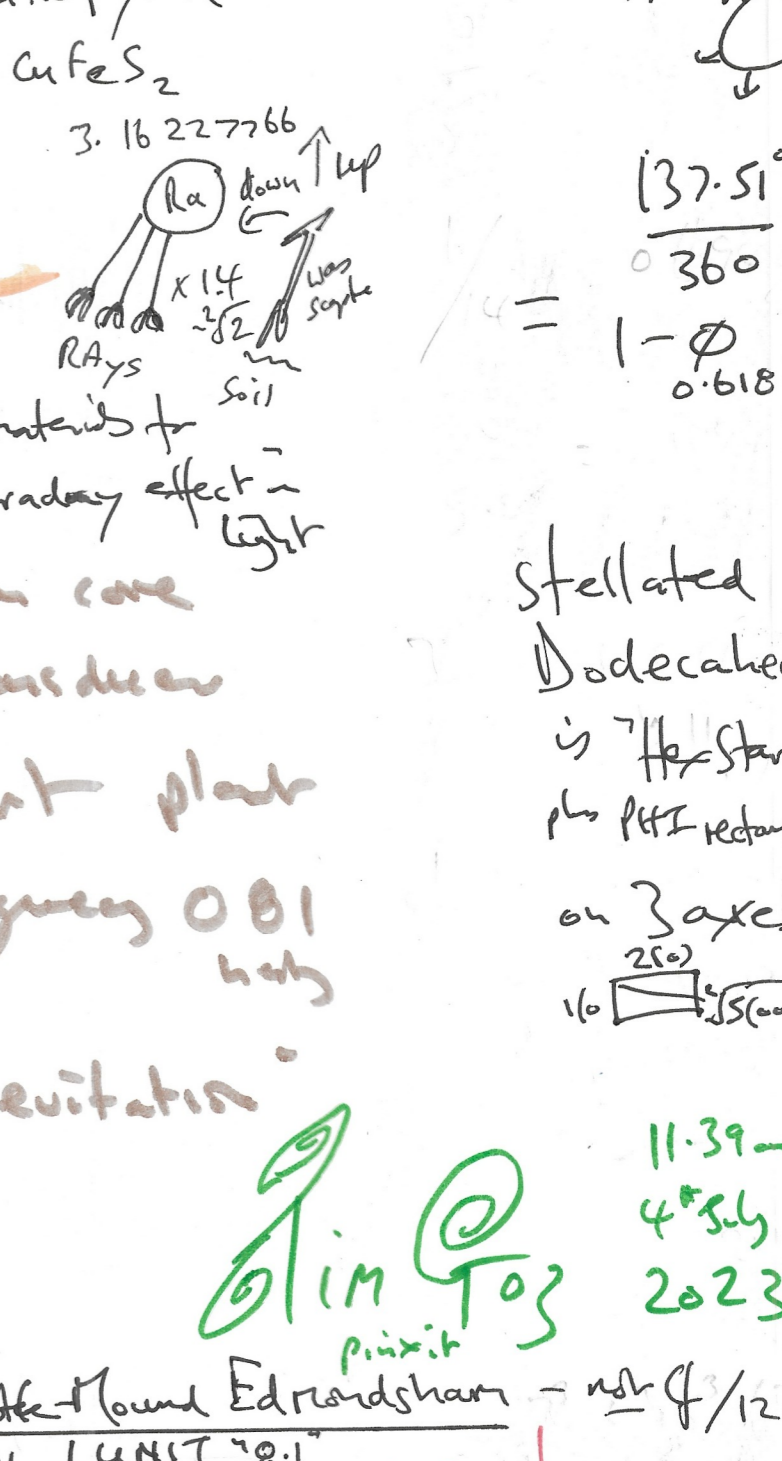
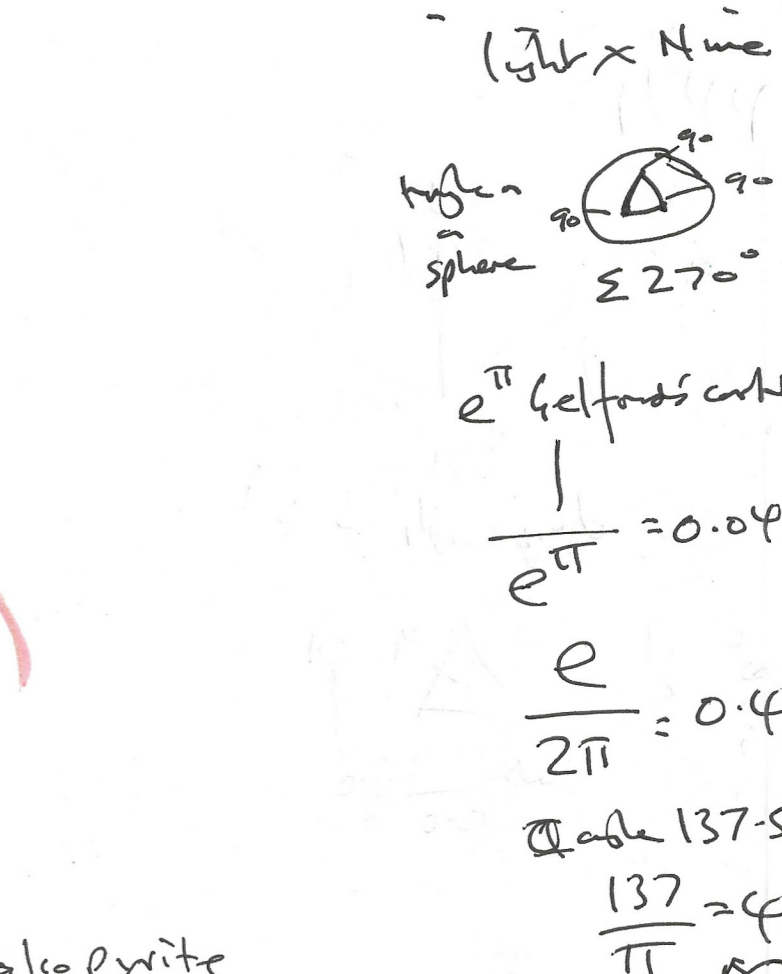
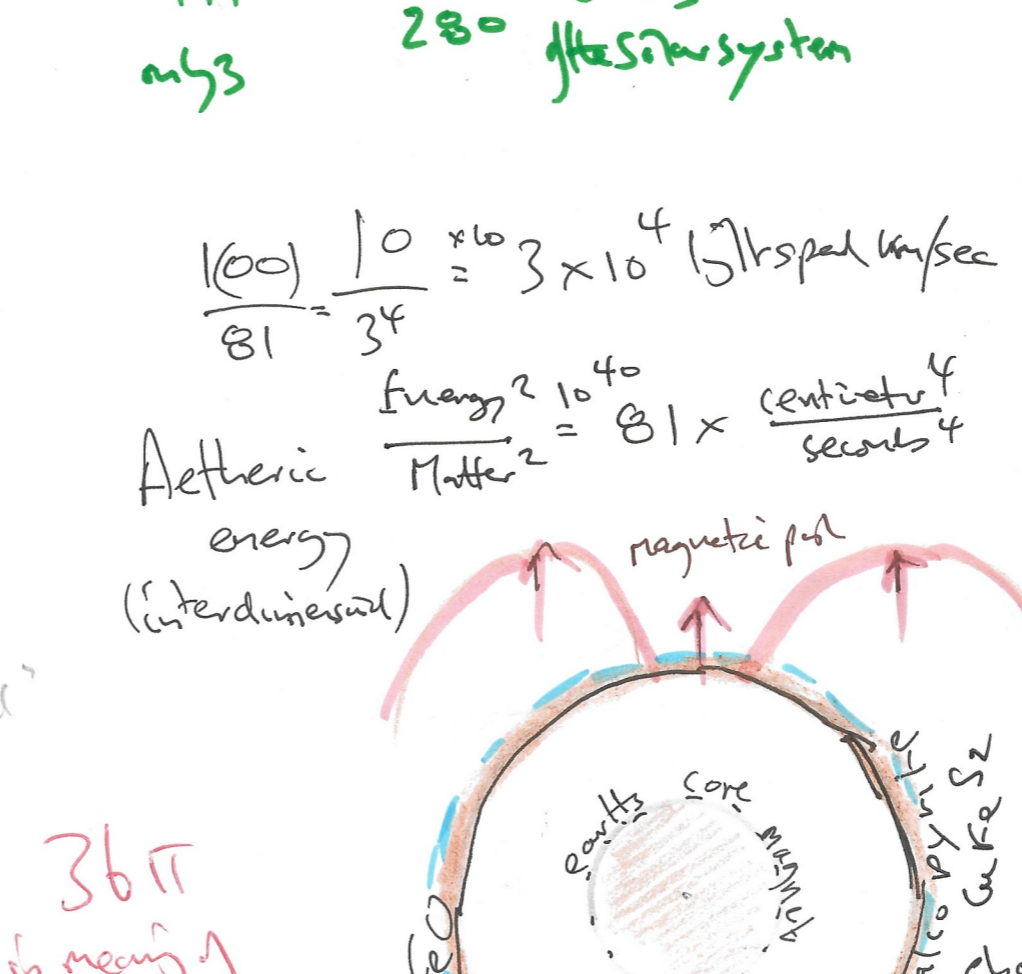
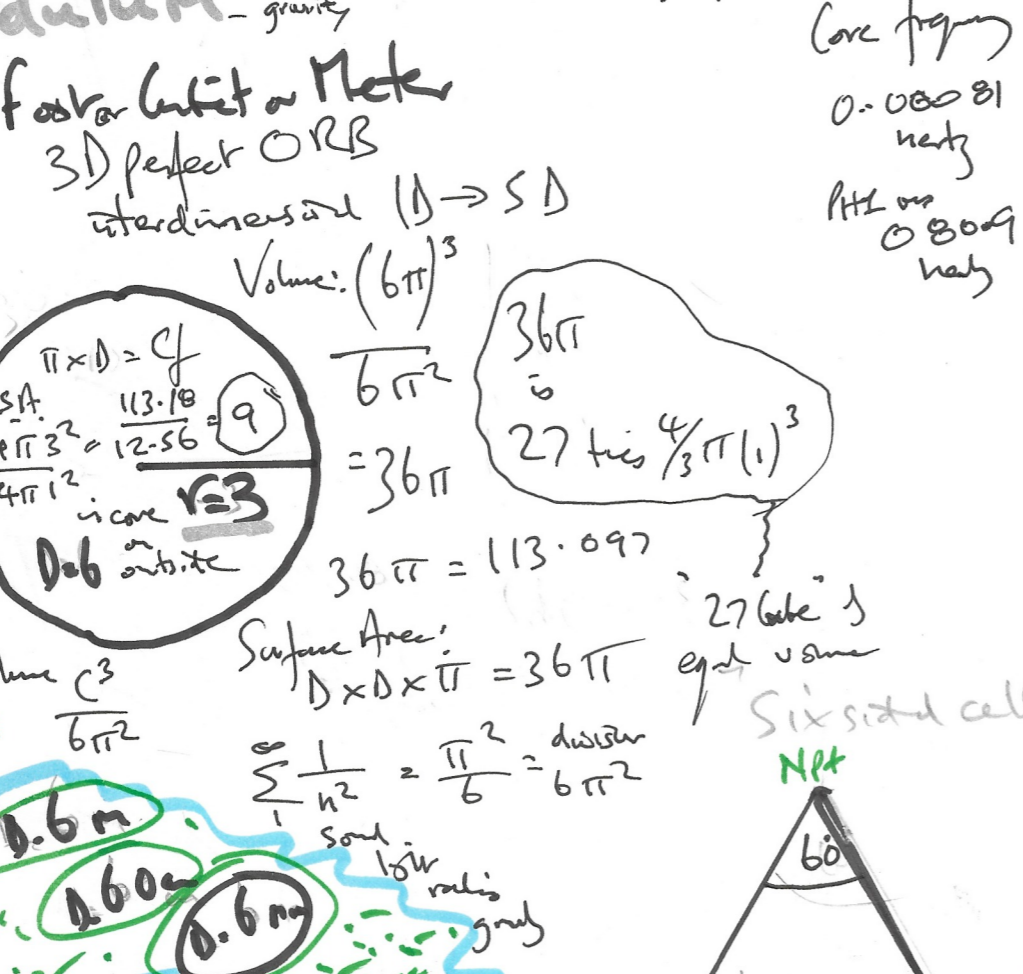
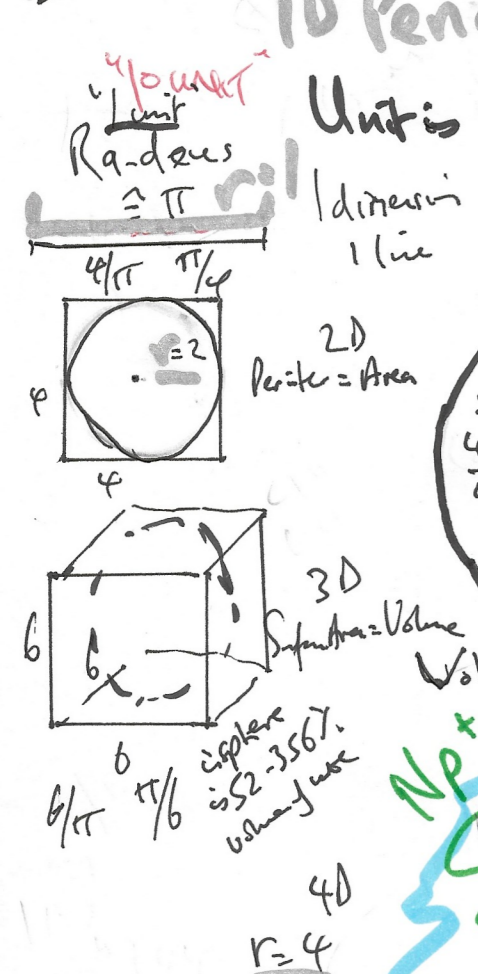
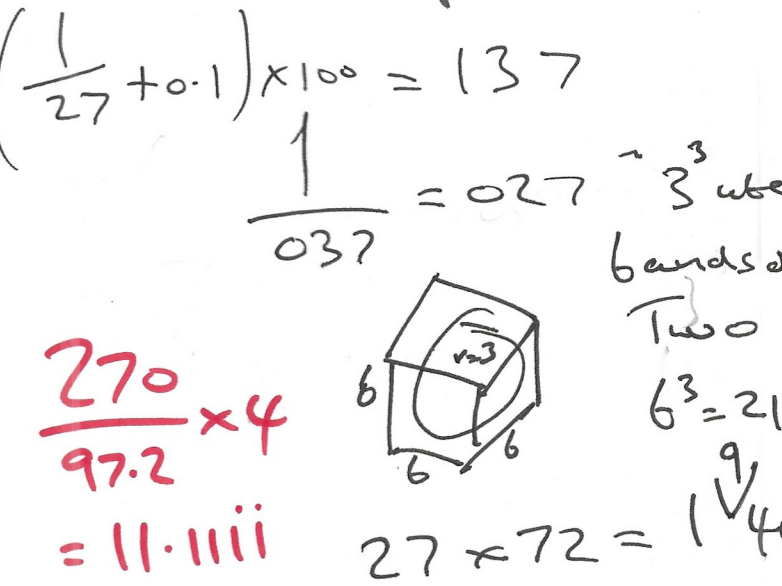
levitation by 037 or  $6\pi^2$   
 where  $e^2 + \pi^2 = 10 - 9.99$

$123 = (37.037 \times \frac{9}{10})$   
 $1.111 = \frac{10}{9}$   
 $\frac{9}{10}$   

111	1+011
117	1+017
127	1+027
137	1+037



$10^2 = \frac{100}{81} = 1.234567[8]90$   
 $\frac{3.16^4}{3^4}$   
 $111 = \frac{311 \cdot (2698)}{280}$  Cubits after the system  
 Aetheric energy (interdimensional)  
 $\frac{100}{81} = \frac{10}{3^4} = 3 \times 10^4$  15th speed km/sec  
 $\frac{Energy^2}{Matter^2} = 81 \times \frac{centimeter^4}{seconds^4}$



Imperial Measure Ancient  
 Microcosm of Universe  
 2 is measure of Cosmos  
 $\sqrt[2]{1.37} = 1.17 = \sqrt[3]{\frac{3}{\pi}}$   
 1 meter x 3.281 = 1.718 feet  
 1 cubit x 1.718 feet = 0.523m  
 1 ancient foot = 0.305m  
 1 ancient foot = 0.2618m  
 1.718 = 2 x 0.8589  
 0.52356 = 2 x 0.2618